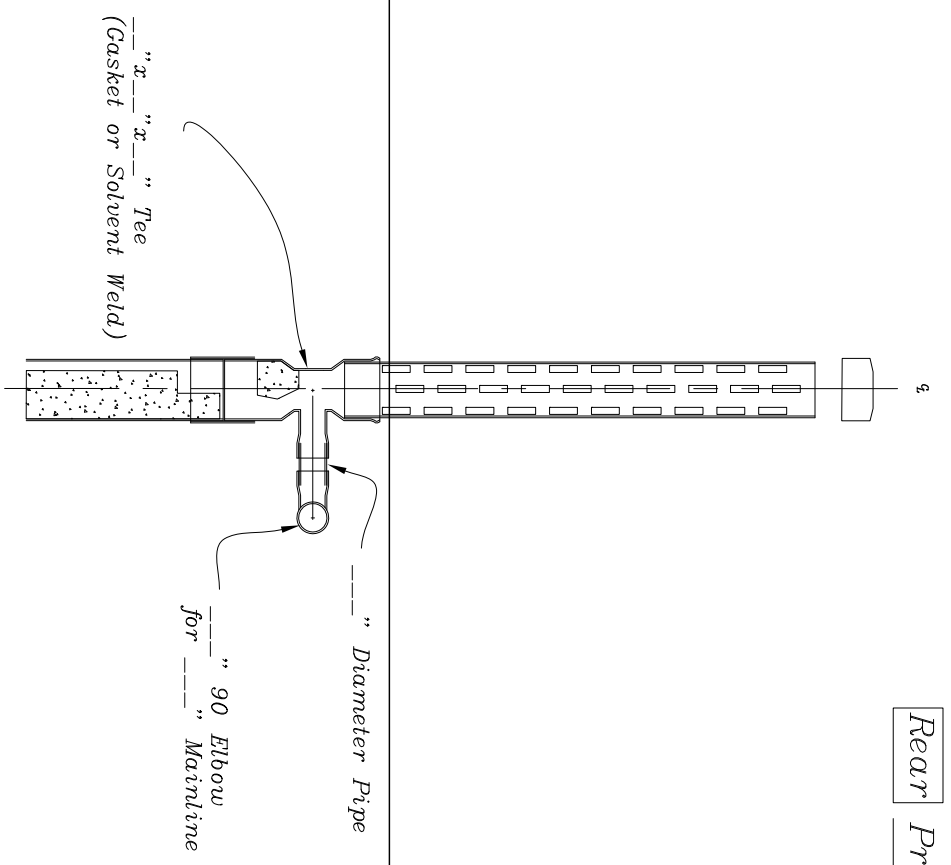
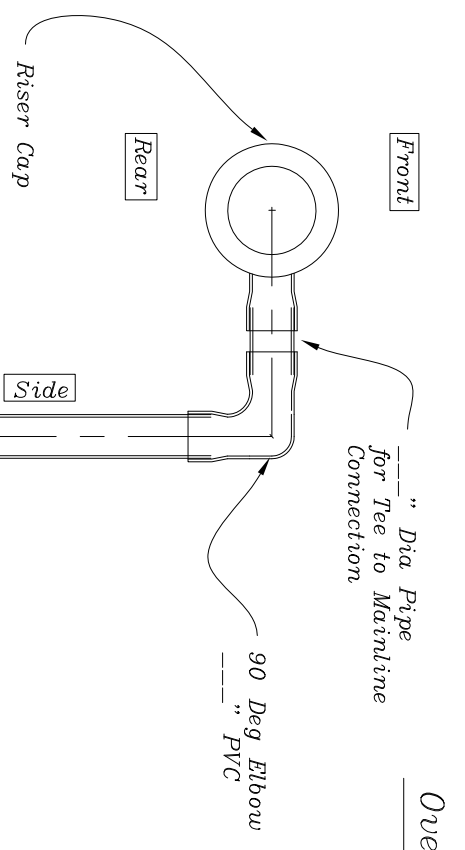


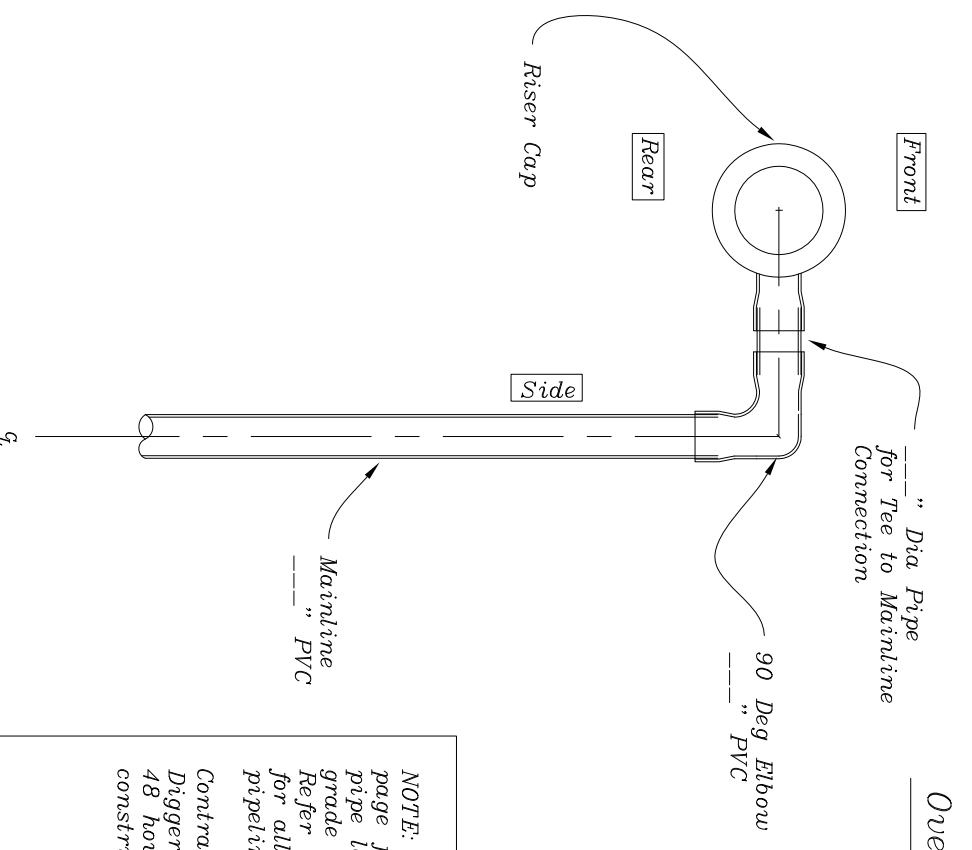
Rear Profile View



Front Profile View



Overhead Plan View



NOTE: Refer to Pipeline Plan View page for location of Deadhead Riser, pipe location, and any additional grade changes in mainline pipe. Refer to Quantities and Specifications for all information on riser and pipeline.
Contractor must notify Nebraska Diggers Hotline at (800)-331-5666, 48 hours before beginning construction.