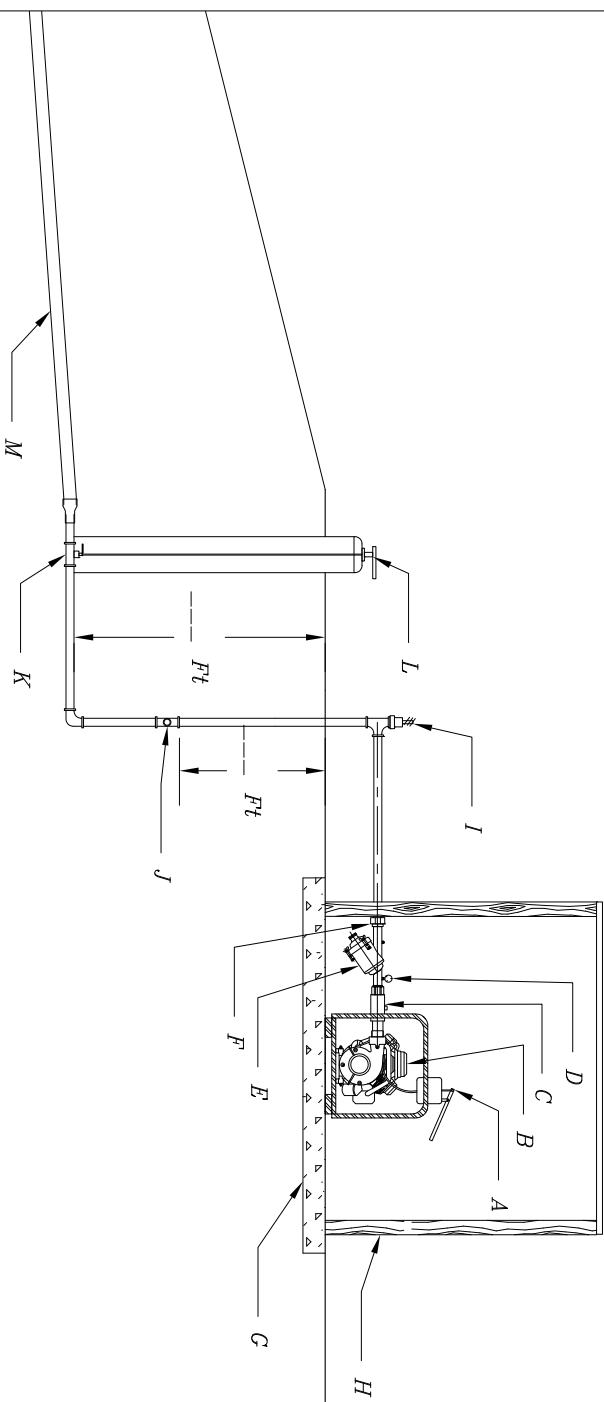


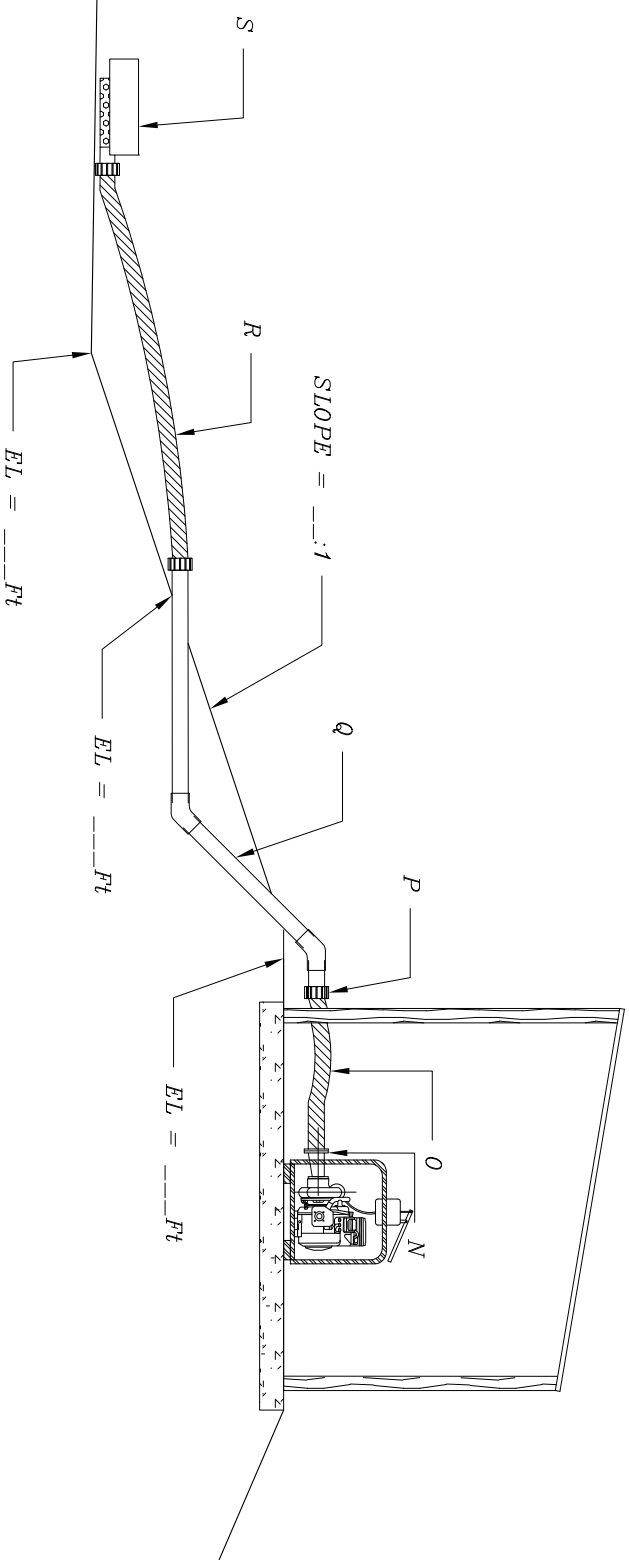
Component List for Diesel Pump Station for Systems under 110 gpm

- A – Primer – Manual
- B – Pump with Diesel Engine (see specifications)
- C – Priming Valve or Check Valve
- D – Pressure Gauge with adjustable low pressure shut down
- E – Inline Pressure Filter (2" minimum)
- F – Union or Flange
- G – Steel Reinforced Concrete Pad (6'x6'x0.5' minimum)
- H – Irrigation Shed
- I – Pressure Relief Valve
- J – Tee for Mainline Drain
- K – Mainline Valve
- L – Valve Control Wrench with PVC Pipe Cover
- M – Mainline Pipe (see specifications)
- N – Eccentric Reducer
- O – Flexible Suction Hose (non-collapsible)
- P – Cam Lock Connection
- Q – Galvanized Steel Pipe Z Drop
- R – Flexible Suction Hose, 8' (non-collapsible)
- S – Floating Strainer
- T – Valve for Mainline Drain, 2"
- U – 2" PVC Pipe for Mainline Drain

Diesel Pump Station
Pressure Side View



Suction Side View



PLAN VIEW

OWNER: UNL-BSE51-A
COUNTY: ###

Date
###

Designed: ###
Drawn: _____
Checked: _____
Approved: _____

