



Installation Background

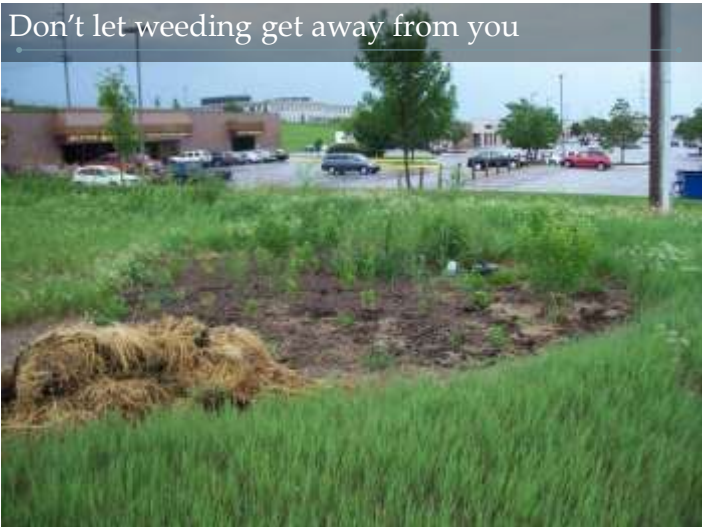
- Entire excavation to 2'
- Underdrain encircling garden
- Ball valve
- Drops into solid line connecting to storm sewer



Summary of Performance History:

- NW Gardens adjacent to railroad, constant flow of sediment
- Feast or famine: originally grouped into 3-4 garden groups to create treatment train, w/last in series hardly receiving water
- 'Random' plantings & encroaching weeds = more difficult to maintain
- Valves are typically shut entire year due to rapid infiltration

A photograph of a bioretention garden. It shows a central area of water surrounded by green plants and a sidewalk. The garden is located next to a road with a white car parked on the side.







...& maximize benefits.

A photograph of a grassy field with a brick building in the background. The field is green and appears to be a mix of grass and weeds. In the background, there is a large, single-story brick building. To the left of the building, there is a parking lot with several cars. There are also some trees and utility poles in the background. The sky is blue with some clouds.

MCC

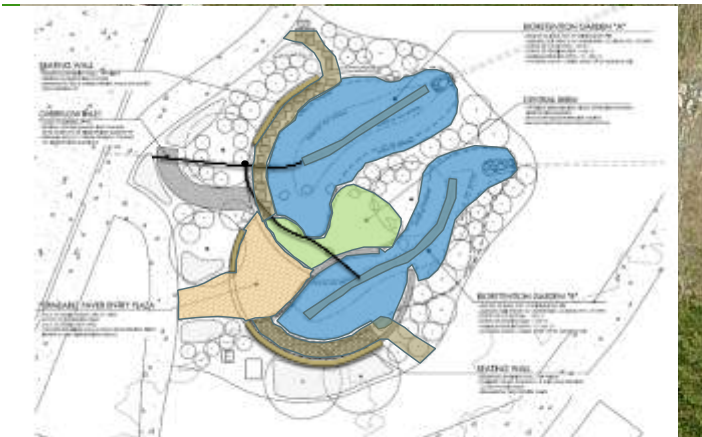
- Waterwise Grant: NSA program, funded through NET
- Establish strong resource for horticulture department & curriculum centered on water & stormwater
- Bidding in April (City)



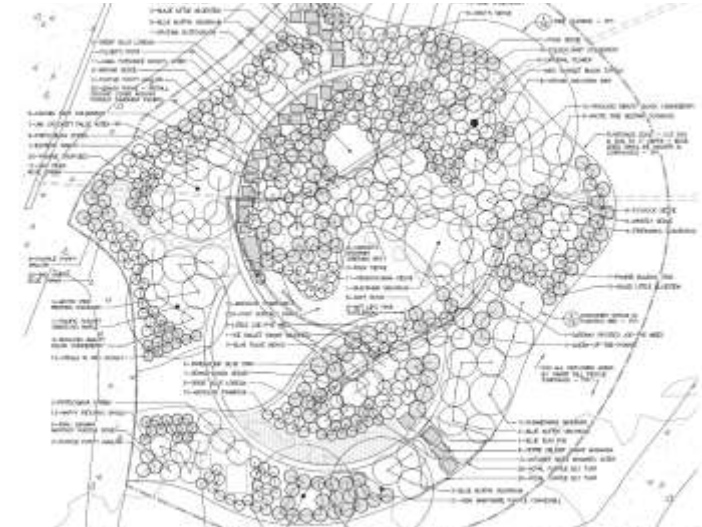


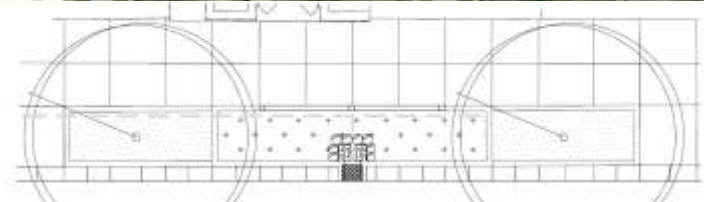
- Updated bioretention design
- 5 types of pretreatments
- Sedge-swales
- Shrub garden
- Prairie plantings
- Green roof with rain chains & barrel
- Porous concrete slab walkway





Coming Opportunities:
UNO Waterwise Bioretention & Landscape

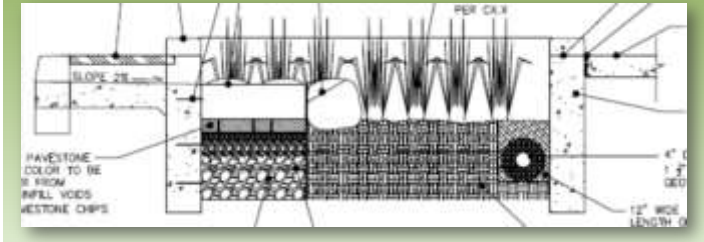




Coming Opportunities:
Florence Streetscape

Florence Streetscape

- Contribution from Waterwise Grant: NSA program, funded through NET
- Neighborhood revitalization project
- Bid this spring, install fall
- ‘Updated’ bioretention design
- Urban, street-side bioretention
- Engineered soil tree planters?
- Innovative pretreatment
 - ‘Sediment well’



Thank you very much for coming today
Questions or comments?



Ted Hartsig: thartsig@oaconsulting.com
Steve Rodie: srodie@unomaha.edu
Andy Szatko: aszatko9@huskers.unl.edu